

# V Chassis Pro fitting guide

The Pro chassis is designed to accept standard length and Shorty lipos.

The wheelbase can be adjusted between 12" and 13.5"

Shocks between 70-100mm can be used.

This chassis kit is designed to work with your Clodbuster axles with only minor modifications.

A 3mm hole needs to be drilled at the bottom of each axle tube to attach the lower link mounts.

Put the 25mm screw in from the outside.



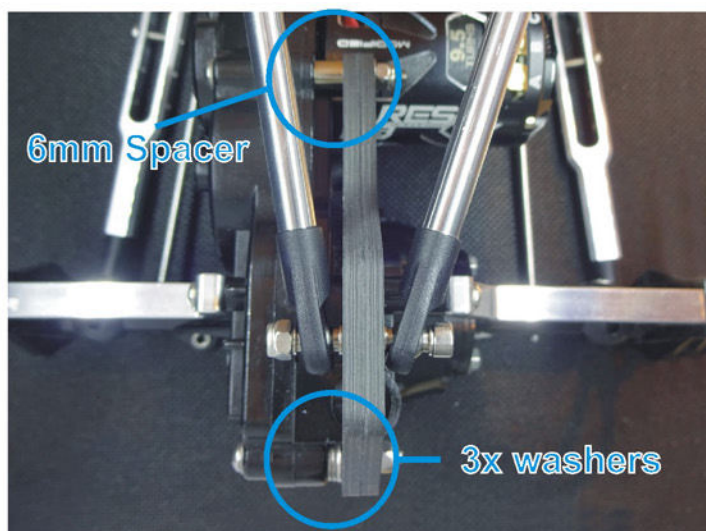
Put the 4mm spacer over the screw first, then the lower link. Slide the rod end over the sway bar wire before attaching it.

You will need wider than stock wheels or wheel wideners to prevent the tyre touching the lower link on full lock.

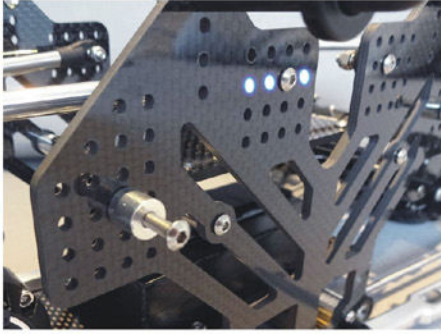


The top link mounts attach to the gearboxes as shown, 1x 6mm spacer at the rear and the 3 x cut washers at the front.

Be careful not to over-tighten the screws as this could cause damage to the plastic gear cases.



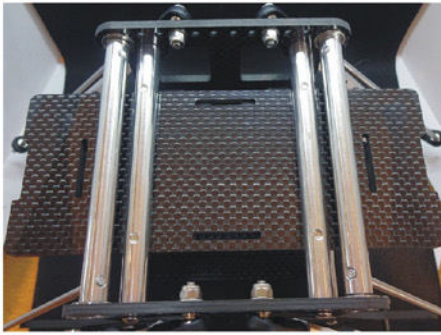
The wheelbase can be adjusted between 12" and 13.5" by changing where the lower arms attach to the chassis.



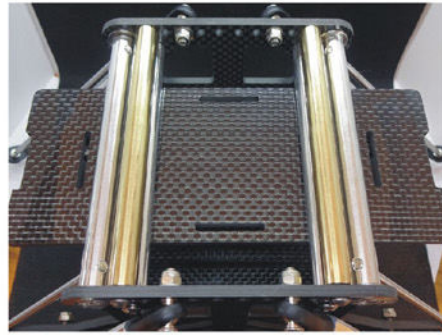
The upper links can be moved by the same number of holes to keep the angle of the gearbox the same, these holes are also 1/4" apart.



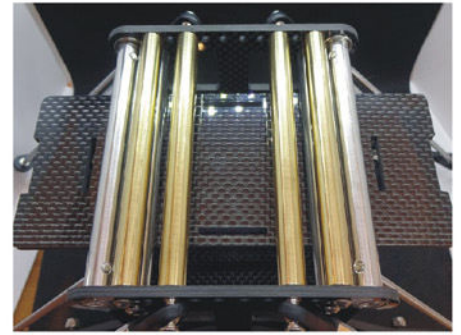
The lower arms can be attached with locknuts to the chassis or they can be screwed directly into the brass weights.



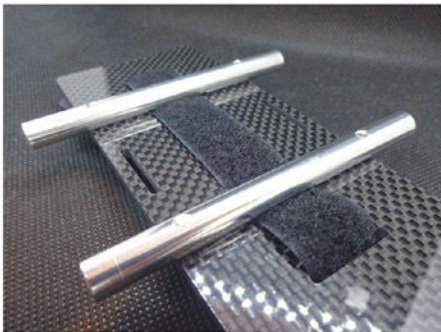
The brass weights can be added to the chassis to aid stability, between 1 and 4 can be used.



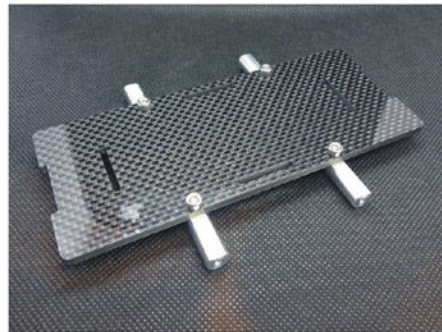
The bars weigh 37.5g each, for a total of 150g of weight if all 4 are used.



The velcro battery straps can be fed between the alloy chassis bars and the battery plate.



Cap head screws are used to hold the tray to the bars to prevent the lipo sliding off.



Three lengths of strap are included, the 40cm strap is for long lipos



The medium 30cm strap for shorty lipos



The shortest 20cm strap to go around the middle for extra security.

